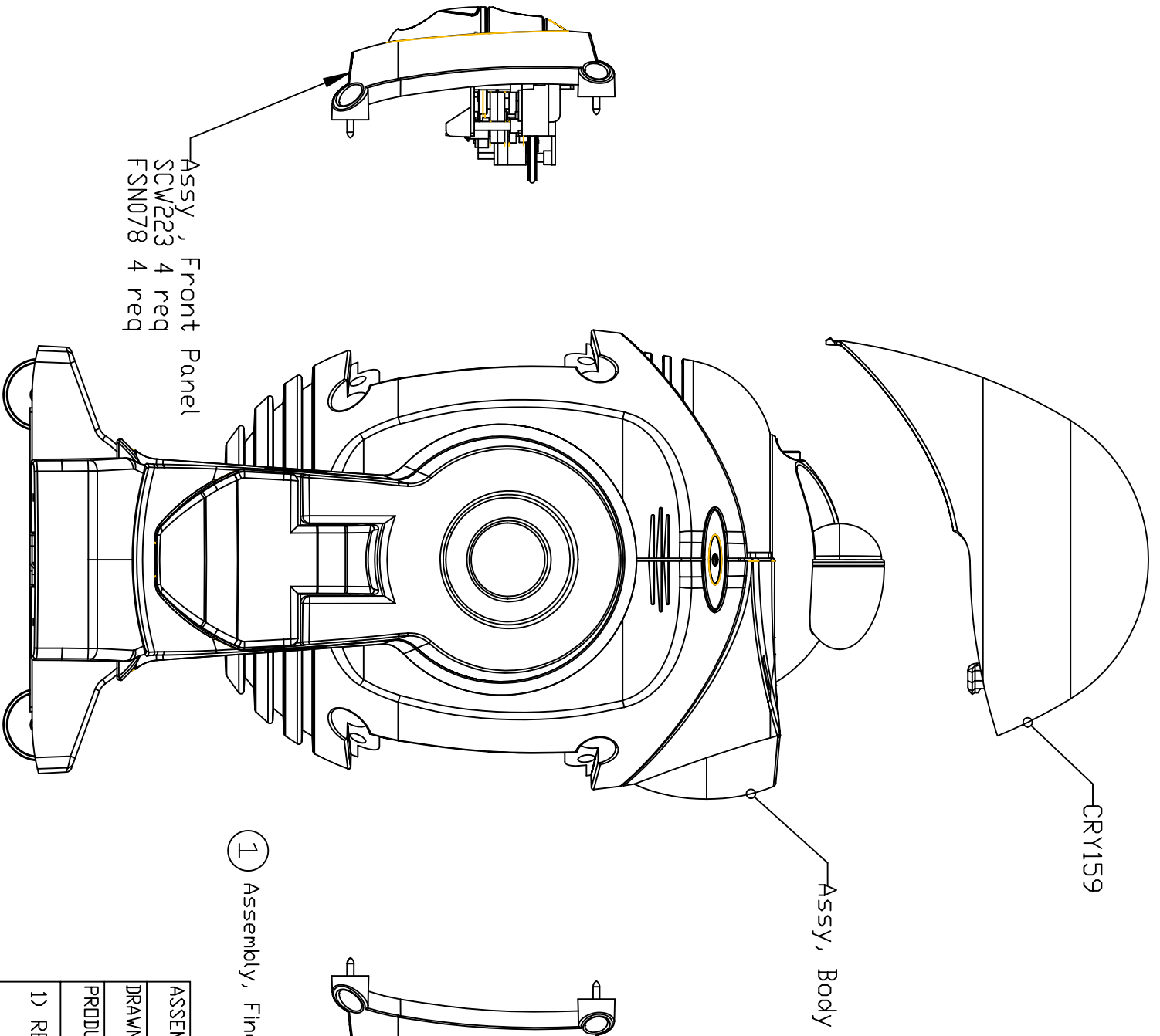
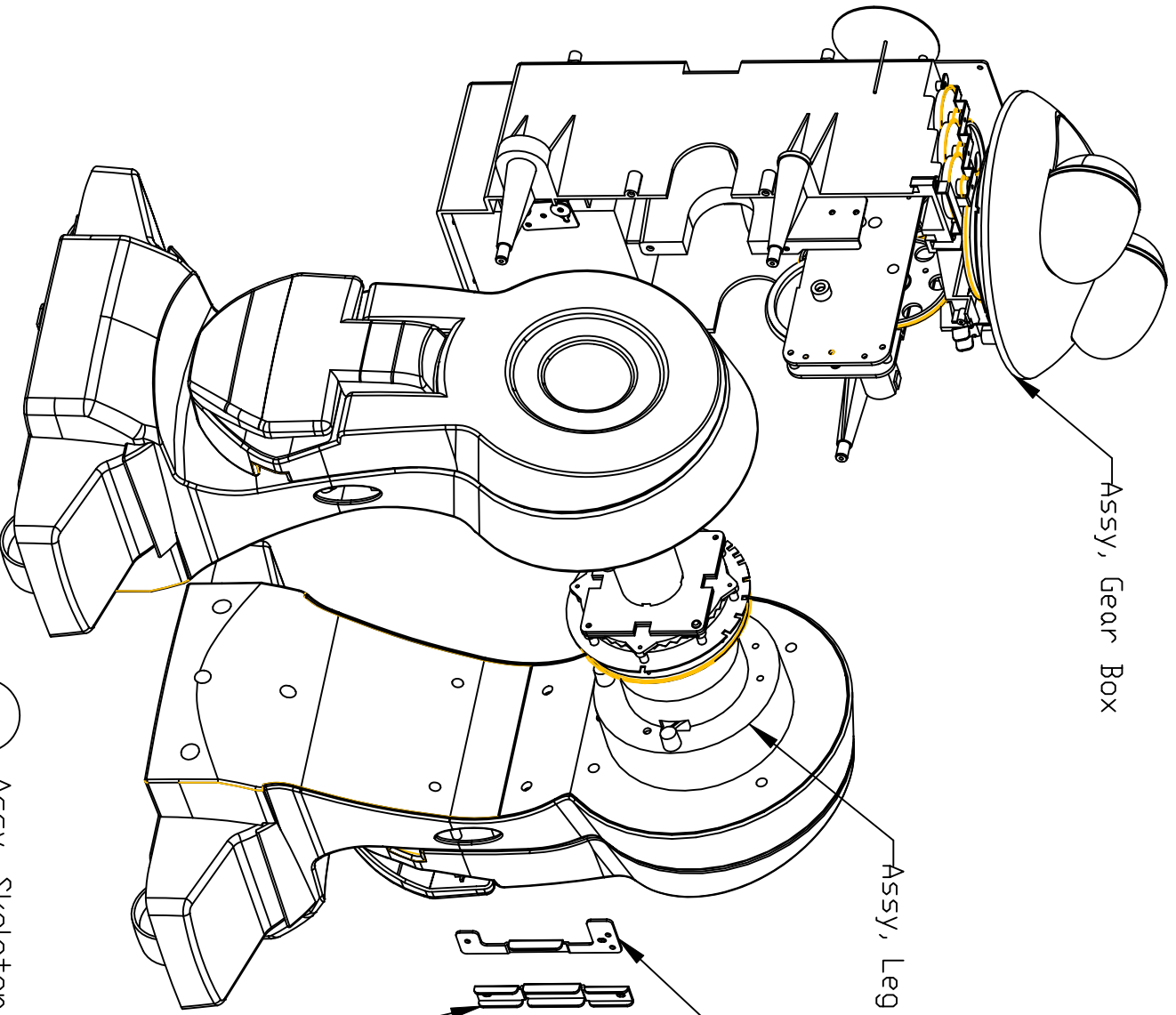


Robot assembly information

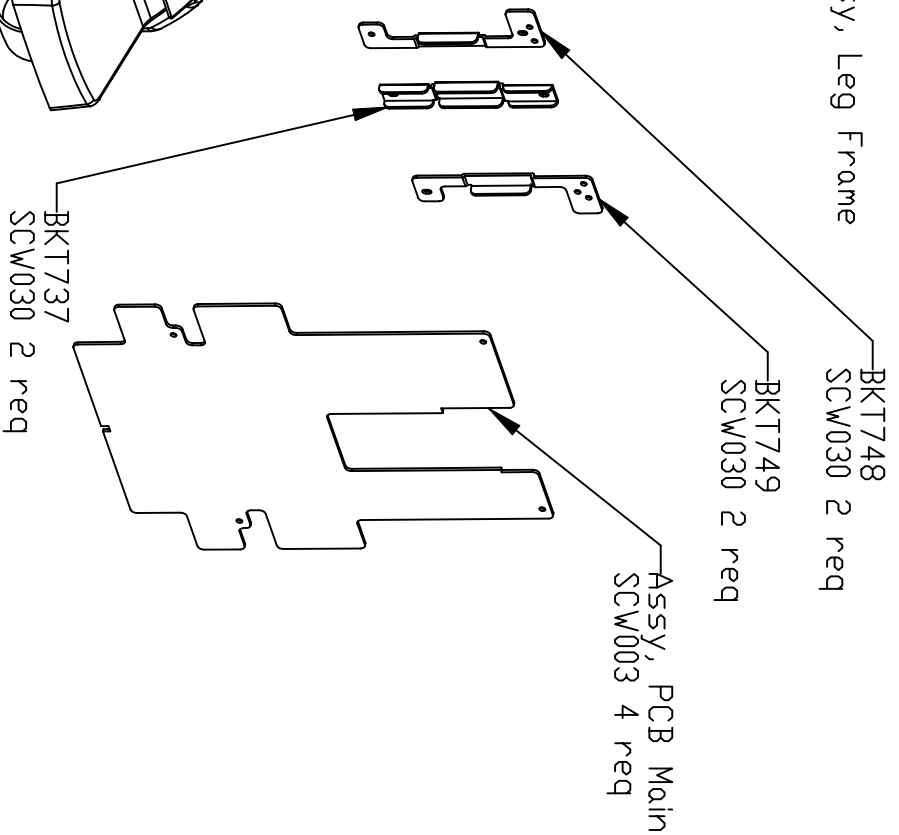


① Assembly, Final Robot

ASSEMBLY INSTRUCTIONS:		
DRAWN	DATE	
PRODUCT ROBOT	CHANGES	ISSUE: 1
1) RELEASE TO PRODUCTION		
		NID. 0025



1.8 Assy, Skeleton
1 req

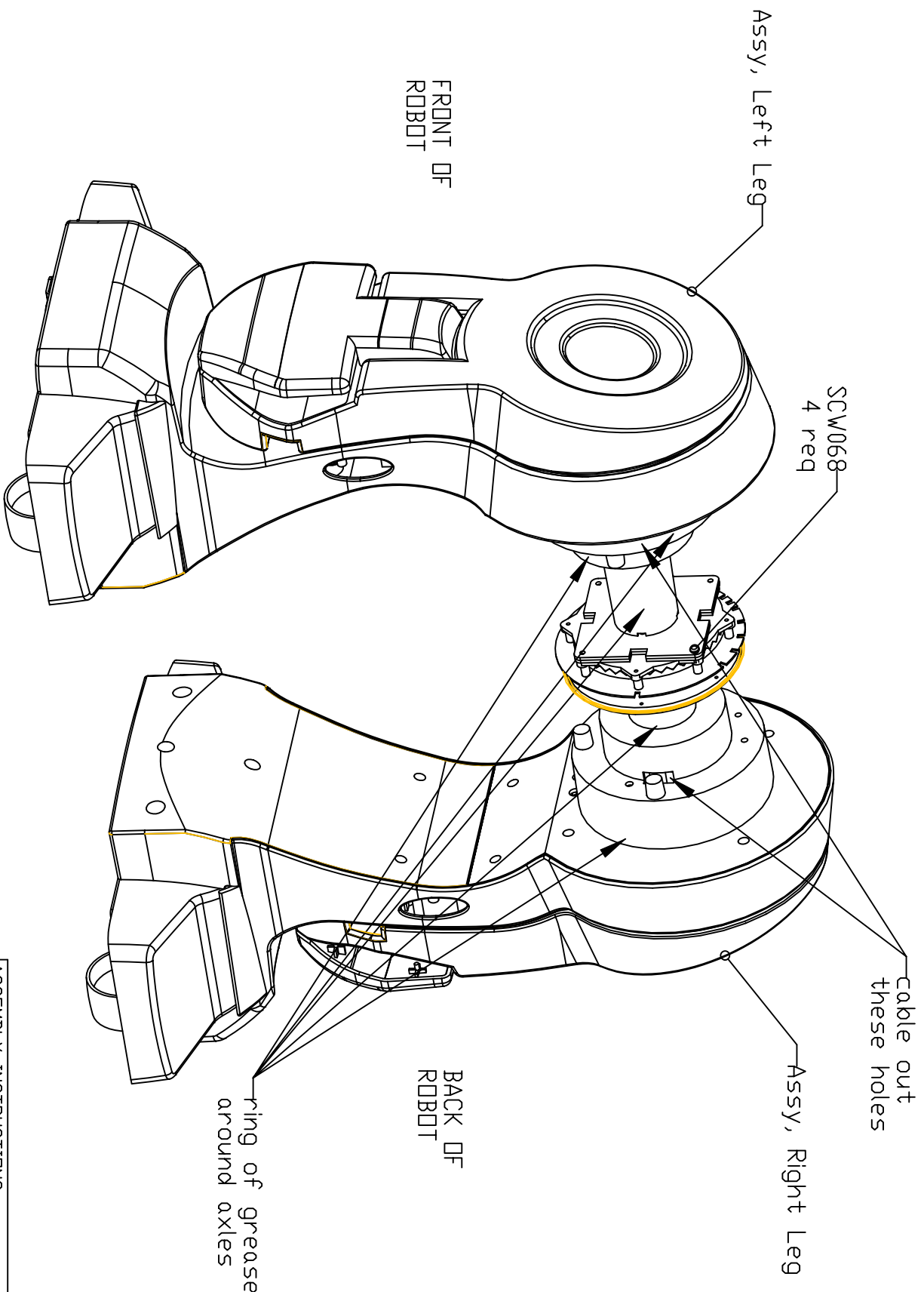


ASSEMBLY INSTRUCTIONS:

DRAWN	DATE
PRODUCT ROBOT	CHANGES
ISSUE: 1	

1) RELEASE TO PRODUCTION

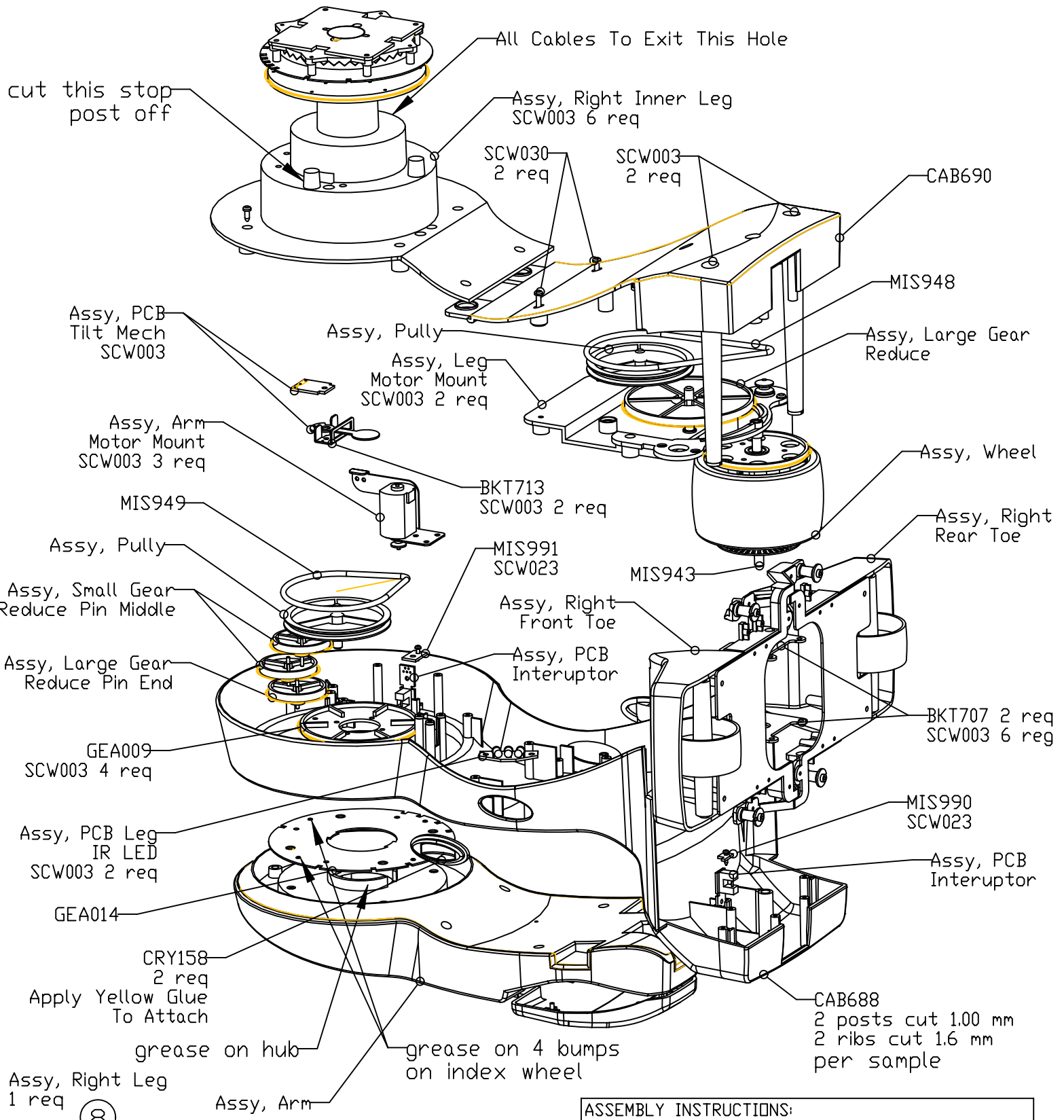
N.D. 0023



② Assy, Leg Frame
1 req

Note: Assembly must pass test fixture

ASSEMBLY INSTRUCTIONS:		
DRAWN	DATE	
PRODUCT ROBOT	CHANGES	ISSUE: 1
1) RELEASE TO PRODUCTION		
		NID. 0022



Note:

- 1) Apply grease on all metal pins and gear teeth
- 2) Leg motor current less than 0.8A
- 3) Arm motor current less than 0.5A
- 4) IR LEDs adjusted by fixture before start of assy
- 5) Photo interuptors to be tested
- 6) Tilt mechanism must be tested

ASSEMBLY INSTRUCTIONS:			
DRAWN		DATE	
PRODUCT ROBOT		CHANGES	ISSUE: 1
1) RELEASE TO PRODUCTION			
			NO. 0021

